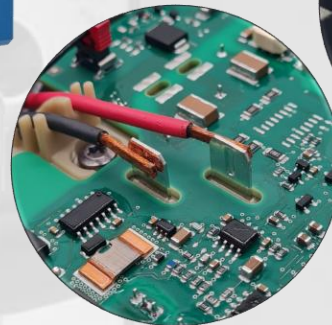
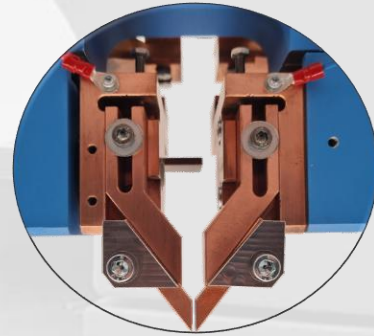
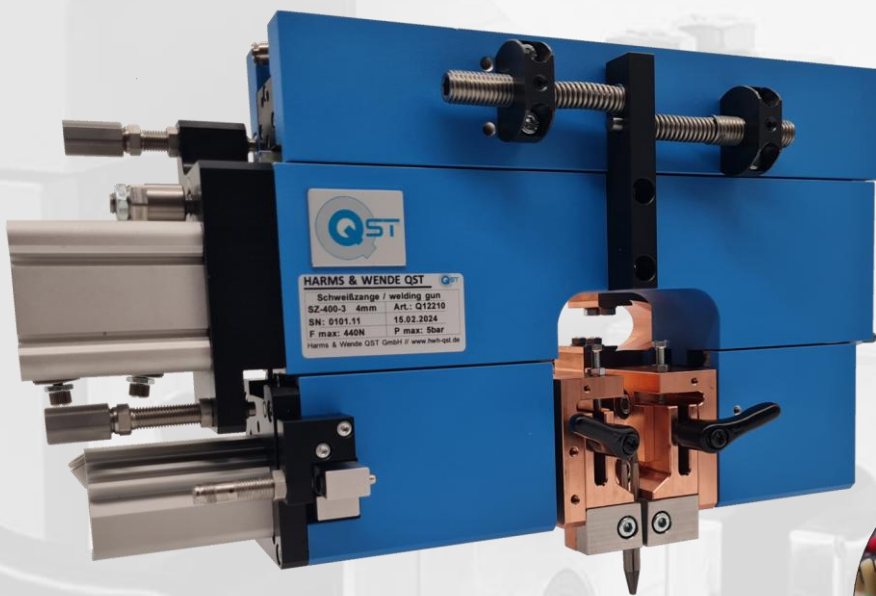




# SZ-400

*The universal spot welding gun to solve your joining and soldering task in small part welding.*

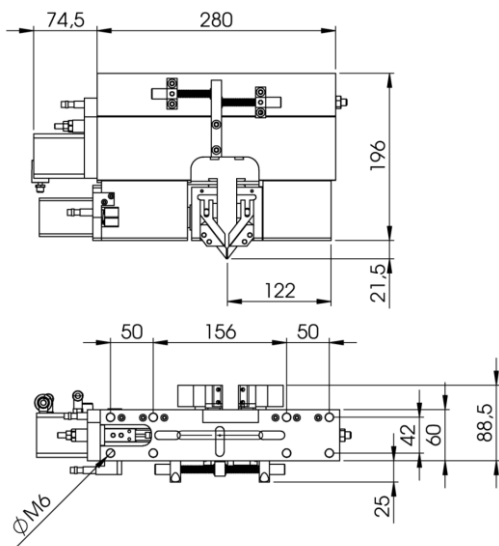


## PERFORMANCE

The welding guns of the SZ series ensure a safe and trouble-free welding process. The flexible systems can be used in both manual workstations and automated systems. The gun offer a wide range of uses in the area of small part welding.

## CHARACTERISTICS

- Suitable for manual workstations and automation solutions
- Use with weld materials with good or poor weldability
- Compact design
- Distance measuring system can be easily upgraded
- Used for joining parts with difficult geometry
- High quality requirements
- Implementation as well as replacement in existing systems possible
- numerous applications  
... and much more



### APPLICATION

- Spot welding
- Projection welding
- Cross wire welding
- Contact welding
- Enamelled wire welding
- Hot Staking

### BENEFITS

- Effective manufacturing processes
- High flexibility
- Maximum security
- High weld quality
- Fast integration
- Safe manufacturing processes
- Ease of maintainability

**SZ-400 – The universal spot welding guns to solve your joining and soldering task in small part welding**

### TECHNICAL DATA

Features	SZ-400
<b>In general</b>	
Style	Automatic version with secondary connections
Options	<ul style="list-style-type: none"> <li>– Customization possible according to customer requirements</li> <li>– Power actuating cylinder or scale house with up to 2 different power springs</li> </ul>
<b>Electrical data</b>	
Secondary connection	Secondary cable to the transformer 25 mm <sup>2</sup> – 250 mm <sup>2</sup>
Signaler	Proximity switch type IR08.P03S-F46.PO1Z.7SL PNP / Baumer
Maximum welding current	approx. 12 kA at 50% E.D.
<b>Mechanical data</b>	
Welding force	approx. 30 N – 480 N depending on the power cylinder
Force introduction (actuation)	pneumatic
Force adjustment	manually with scale house and knurled screw or pneumatically with power cylinder
Compressed air connection	min. 6 bar network pressure
Electrode holding	Individually
Arm projection / Arm distance	Individually
Electrode stroke in mm	0 – 40, mechanically adjustable
Dimensions in mm	218 x 355 x 114 (H x W x D)
Weight	approx. 12 kg
<b>Operating data</b>	
Ambient temperature	0 – 40° C
Cooling	Water-cooled electrode arm holders