



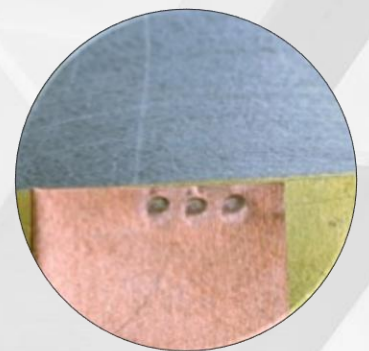
ZFK-200-R-SERV

The universal spot welding heads to solve your joining and soldering task in small part welding.



With servo-electric delivery movement

With force buildup in the opposite direction

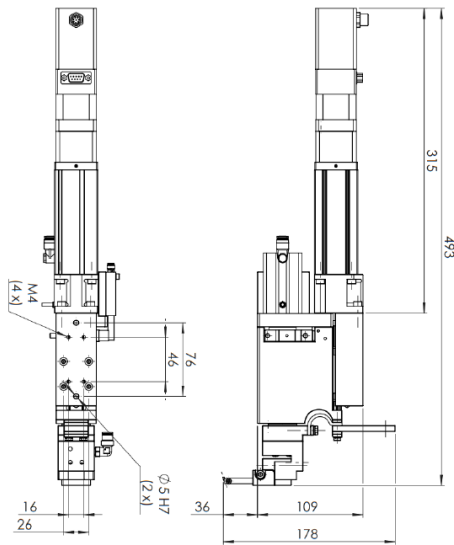


PERFORMANCE

The welding heads of the ZFK series ensures a safe and trouble-free welding process. The flexible systems can be used in both manual workstations and automated systems. The heads offer a wide range of applications in the area of small part welding

CHARACTERISTICS

- Suitable for manual workstations and automation solutions
- Compact design
- Use with weld materials with good or poor weldability
- Integrated distance measuring system
- High quality requirements
- Implementation and replacement in existing systems possible
- Quick replacement of the power-springs/follow up units
- numerous applications
- Pneumatic or servo-electric version avavailable
... and much more



APPLICATION

- Spot welding
- Projection welding
- Contact welding
- Resistance soldering

BENEFITS

- Effective manufacturing processes
- High flexibility
- Maximum security
- High weld quality
- Fast integration
- Safe manufacturing processes
- Ease of maintainability
- High cycle times
- Gentle landing

TECHNICAL DATA

Features	ZFK-200-R-SERV
In general	
Style	Guide head for integration without rack
Options	Customer-specific adaptation to the welding task
Electrical data	
Secondary connection	Secondary cable to the transformer 70 mm ² – 90 mm ²
Signaler	Proximity switch type PNP (force/pressure reached)
Maximum welding current	approx. 5 kA at 50% E.D.
Mechanical data	
Welding force	approx. 8 N – 227 N depending on the power cylinder
Force introduction (actuation)	Servo-electric
Force adjustment	pneumatic
Compressed air connection	max. 6 bar
Electrode holding	Electrodes Ø 3 mm
Arm projection / Arm distance	Max. melt-down stroke 2 mm
Electrode stroke in mm	0 – 20
Dimensions in mm	493 x 80 x 178 (H x W x D)
Weight	approx. 5 kg
Operating data	
Ambient temperature	0 – 40° C
Cooling	Water-cooled electrode arm holders

